



# MONTHLY MEMBERSHIP PROGRESS REPORT

District 43 K

Results as of: 11/30/2018

GMT: STEVE ANTON

LOCATION KENTUCKY

GMT CA

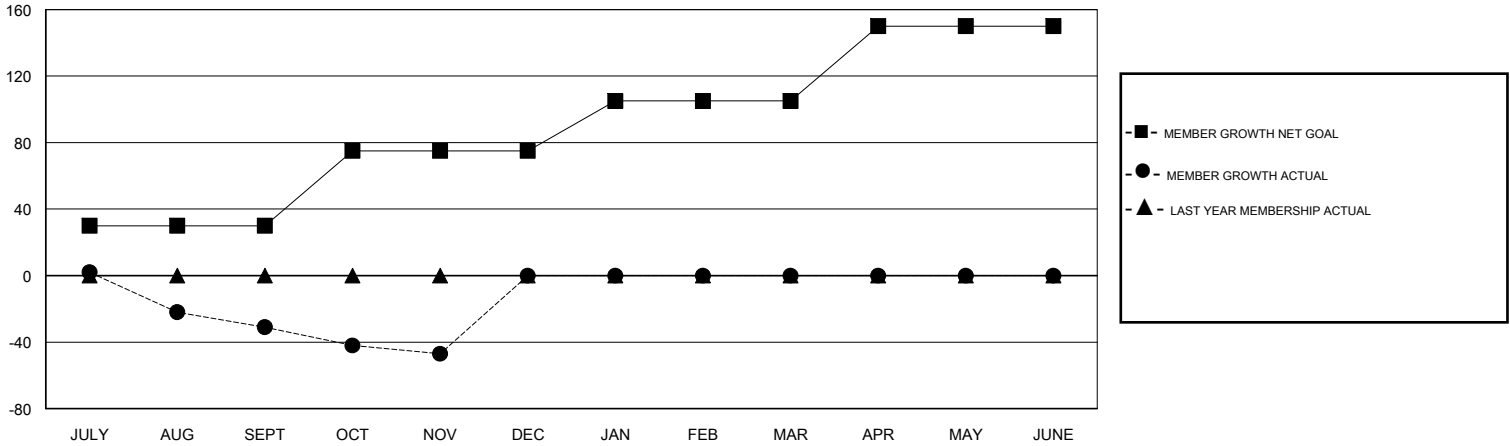
Clubs			
RESULTS FOR 2018-2019			
QUARTER	NEW CLUB GOAL	NEW CLUBS	DROPPED CLUBS
JULY/AUG/SEPT	0	0	0
OCT/NOV/DEC	1	0	0
JAN/FEB/MAR	0	0	0
APR/MAY/JUNE	1	0	0

Members			
RESULTS FOR 2018-2019			
QUARTER	MEMBER GROWTH NET GOAL	MEMBER GROWTH ACTUAL	DROPPED MEMBERS ACTUAL (including transfers)
JULY/AUG/SEPT	30	57	88
OCT/NOV/DEC	45	29	42
JAN/FEB/MAR	30	0	0
APR/MAY/JUNE	45	0	0

GOALS AND ACTUAL NEW CLUBS CUMULATIVE



GOALS AND ACTUAL MEMBERS CUMULATIVE



DROPPED CLUBS: 0	29 CLUBS OF 73 ADDED 1 OR MORE NEW MEMBERS	<u>GENDER DISTRIBUTION</u>	
DROPPED MEMBERS		MALE	1,502 (66.93%)
DECEASED	7	FEMALE	742 (33.07%)
CLUB CANCELLED	0	Women Percentage Fiscal Year Goal: 40%	
OTHER	123	TOTAL FAMILY UNIT MEMBERS	
TOTAL	130	460	
<a href="#">CLICK HERE FOR CUMULATIVE MEMBERSHIP DATA</a>		FAMILY MEMBERS PAYING HALF DUES	
		236	